

mansura

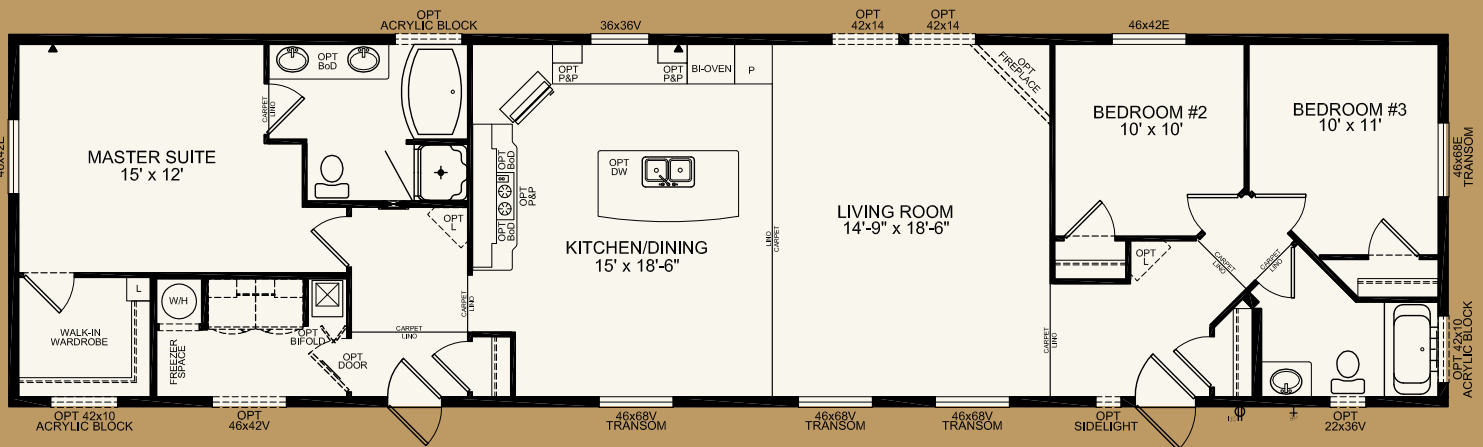


"ECLIPSE"



3 BED/ 2 BATH  
1520 SQ. FT.  
20' X 76'

MODEL 20720



1421 Brier Park Crescent NW | Medicine Hat, AB T1C 1T8 | Phone: 403.527.1555 Fax: 403.528.4486

[www.moduline.ca](http://www.moduline.ca)

Due to continuous product development and improvement, prices, specifications and materials are subject to change without notice or obligation. Square footage and other dimensions are approximate. Included renderings are artist renderings and are not intended to be an accurate representation of the home. Renderings and floor plans may be shown with optional features and/or third-party additions that may not be available in all regions or situations.

### STANDARD FEATURES & SPECIFICATIONS

#### SPECIAL FEATURES

- Beautiful exterior features including 5/12 pitch dormer, Tudor pillars, Hardiboard & Shake treatments
- Wood treatment on hitchend & curbside windows
- Extended eaves on all 4 sides (12")
- Transom windows on curbside & hitch end
- Deluxe stainless steel range hood
- Black appliances
- Built in oven with built in microwave above
- Countertop cerantop range
- Stepped cabinets
- Countertop build out at range
- Black anthracite sink
- Full tile backsplash in kitchen with special tile accent
- Chef's island
- 36" shower in ensuite
- Framed mirror in both baths with theatrical lights

#### GENERAL CONSTRUCTION

- 8' Ceilings Cathedral ceiling in living, dining area, and kitchen
- Maintenance free vinyl lap siding and metal fascia
- Fiberglass shingle roof (25 year)
- 7/16" roof sheathing
- Engineered full 4-12 pitch roof trusses
- Textured (primed) gyproc ceiling
- Exterior walls built 2"x6" @ 16" o.c strengthened with 3/8" OSB sheathing on inside and outside of wall
- 5/8" T & G OSB Floor Decking glued and screwed
- 2"x10" Floor joists @ 16" o.c.
- Heavy tubular steel frame
- Decorative insulated entry doors with dead bolt and peephole (36" front door)
- Coach lights at all exterior entrances
- Screen doors on front and rear entrances
- Residential maintenance free Low E PVC windows c/w vinyl sills, screens and security locks
- Exterior GFI electrical outlet and frost free water tap
- Insulation meets or exceeds codes
- Floors R-20, Walls R-20 & Ceiling R-40 (min)
- \*Insulation plus package is a forced option on all BC homes

#### TASTEFUL INTERIORS

- Plush saxony carpet in living room, hall and all bedrooms (certain models)
- Quality cushioned linoleum flooring all other areas (Selected by décor)
- Coordinating window valance over 2" white faux wood blinds (inset in window) in all areas except bathrooms
- Pre-finished interior passage doors

#### BRIGHT, BEAUTIFUL KITCHENS

- 19 cubic foot, 2-door, frost free refrigerator
- Spacious pantry
- Doweled, full modular cabinetry w/crown moulding
- Three distinctive colors of cabinet doors to choose from

#### SPACIOUS BATHS

- One-piece quality fiberglass tub and shower units
- Oval tub in ensuite
- Curved Shower rods in all tubs
- Deluxe tile backsplash
- GFI receptacle
- Power bath fan(s)
- Single lever faucet on tub/shower unit
- 36" vanity height in ensuite

#### UTILITY SERVICES

- 100 amp electrical pane
- High efficiency (90+AFUE) gas furnace with condensation pump
- 33 Imp. (40US) gallon natural gas water heater
- Wired, plumbed and vented for washer and dryer
- Shelf above washer and dryer (except 20453)
- Primary exhaust fan c/w dehumidistat
- CO/Smoke Detector(s) c/w battery backup
- Dedicated GFI breaker and receptacle for heat tape
- Dedicated receptacle in "Freezer Area"
- Communication outlet (2) – Kitchen and Master Bedroom